

VISION MAX PRO



ULTRA BRIGHT ENERGY EFFICIENT DISPLAY FOR SPORTS & DOOH





Vivid Colours and Ultra Bright

Complete grayscale reproduction, wide viewing angles and a high contrast ratio all contribute to the vivid and natural images of VISION MAX PRO. Moreover, ultra high bright LEDs ensure brilliant images even in direct sunlight.



Diecast LED Tiles

400mm x 300mm diecast aluminium LED tiles facilitate fast, efficient heat dissipation, even in the hottest climates.



Easy Servicing

Front or rear service with quick access to all components.



Power Saving

The superb energy performance delivered by common cathode technology reduces power usage by 30%, making VISION MAX PRO a class leader.



5 Year Warranty

As with all digiLED Premium products, VISION MAX PRO comes with a 5 year warranty. Contact your local Service Lab via online RMA for our renowned fast turnaround.

• **VISION MAX PRO - Bulletproof Performance.** digiLED's reputation for reliability ensures the highest quality electronics throughout. In the hottest environments - no need for secondary cooling. Breather valves in the cabinets and hard-wired internals provide super reliability.

• **VISION MAX PRO - Creativity and Bespoke Design.** VISION MAX PRO extends digiLED's reputation for innovative design and unique creativity. With super-tight curving corners to customised configurations, MAX PRO is ready to accept the challenge to creative your vision.

• **VISION MAX PRO - Lightweight.** At around 30kg/sqm, VISION MAX PRO returns a lightweight but robust screen system.

• **VISION MAX PRO - Fire retardancy.** No compromise is made on quality, with the system achieving TÜV 5VB status.

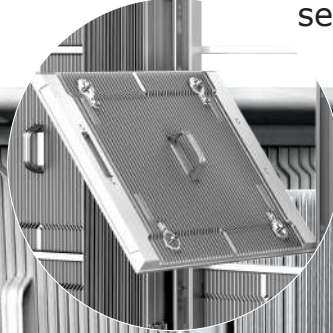


FEATURES

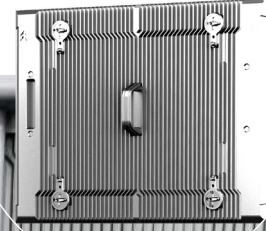
Quick and easy mounting plate design



Front or rear servicing



16:9 LED Tiles (400x300mm)



At least 30% power saving



PDU at the base for easy servicing access



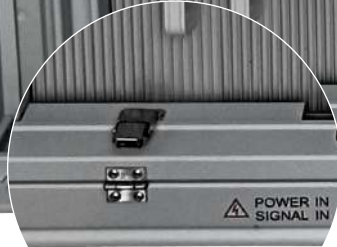
Innovative power and signal back up technology



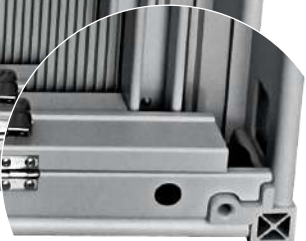
Fire retardant cabinet (5VB)



Hard wired and hidden cable design at the base of the cabinet



Entirely aluminium cabinet construction gives excellent heat dissipation





SPECIFICATIONS

OUTDDOR		VISION MAX PRO6670o	VISION MAX PRO10o
Physical Pixel Pitch (HxV) mm		6.67	10
Pixel Resolution (Width/Height)	pixels/panel	120/135	80/90
LED Tile Dimensions (W X H)	mm	400 x 300	
Panel Dimensions (W x H x D)	mm	800 x 900 x101	
Optional Panel Dimensions (W x H)	mm	800 x 1200, 1200 x 900, 1200 x 1200, 1600 x 900	
Panel Depth	mm	75	
Standard Panel Area	m2	0.72	
Standard Weight	kg/m2	31.94	31.94
Minimum Curving Radius	m	0.8	
Corner Options	90deg	Yes	
Ingress Protection	(Front/Rear)	IP66/IP66	
Maintenance Access		All Front or All Rear	
Standard Refresh Rate	Hz	≥3840	
Brightness*	nits	≥8000	≥10000
Calibrated Brightness*	nits	≥7200	≥8000
Input Voltage	VAC/Hz	100~250/50-60	
Max Power Consumption**	W/sqm	631	600
Typical Working Power Consumption**	W/sqm	189	180
Operating Temperature (min/max)	degC	-20 up to +60	
Certification		CE (IEC82368-1), (FCC, ETL, EMC, LVD, RoHS, CB (TUV SUD)): TBC	
Fire Proofing		5VB (TUV SUD)	
HDR***		(see foot note)	

All specifications are subject to change without prior notification. E&OE.

Specifications are for standard system configuration. Contact your digiLED expert for detailed specification.

*The figures shown for brightness are standard guideline figures only and based on average test laboratory conditions.

** The figures shown for power consumption are standard guideline figures only and based on average test laboratory conditions.

***HDR: Subject to system configuration and processing.



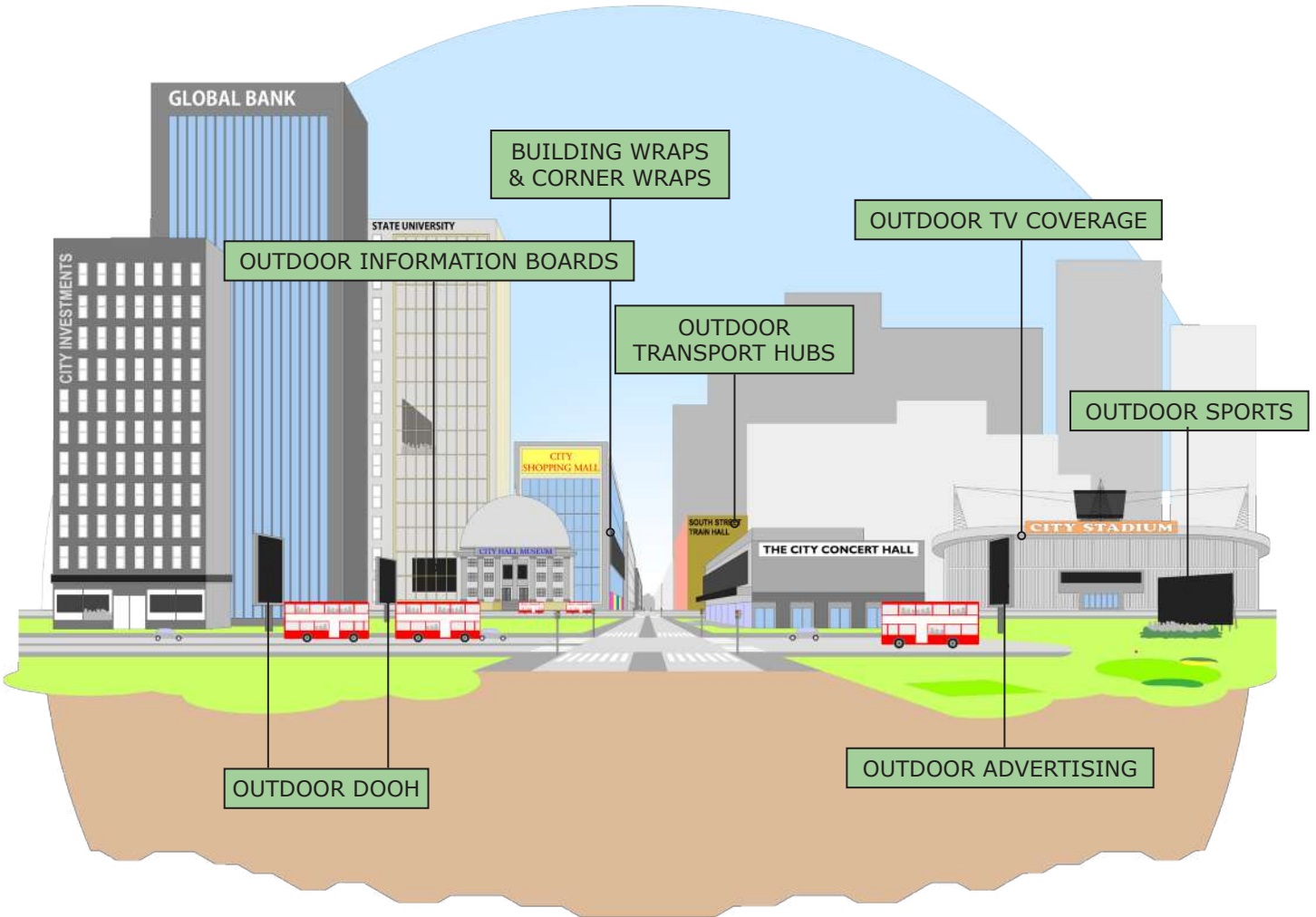
PANEL INFORMATION

STANDARD SINGLE PANEL 800 x 900 x 75mm





OUTDOOR





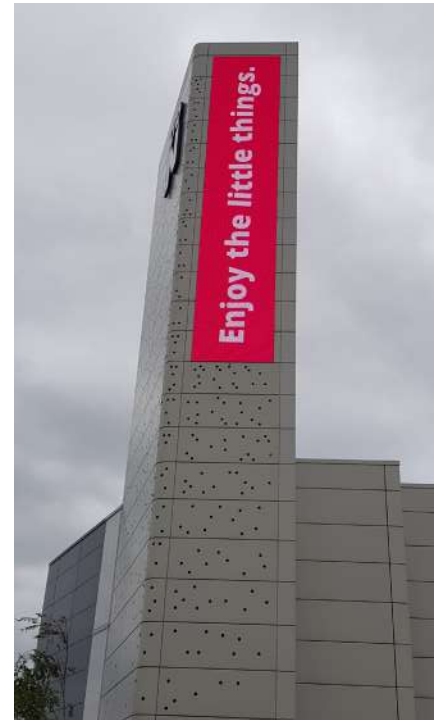
APPLICATION EXAMPLES



Yorkshire County Cricket Ground, UK



Rosebank Mews Mall, South Africa



University of Northampton, UK



37,500 Seater Stadium, Japan



BUILT WITH PREMIUM COMPONENTS: THE HIGHEST GRADE PARTS THROUGHOUT



BACKED BY OUR OWN HIGHLY KNOWLEDGEABLE digiLED TECH HUB QC ENGINEERS, THE INDUSTRY'S LEADING QC TEAM



COMES WITH A 5 YEAR WARRANTY: TECH HUB SERVICES LOCATED in US, UK, ASIA and SOUTH AFRICA



INCLUDES AN ENHANCED & COMPREHENSIVE SPARES PACKAGE



AN APPRECIATION FOR QUALITY



BUILT IN TRUSTED, PREMIUM PARTNERS ASSEMBLY PLANTS: MONITORED AND QUALITY CONTROLLED BY digiLED TECH HUB ENGINEERS



SUBJECT TO A COMPREHENSIVE 228 STEP QC PROGRAMME FROM POINT OF ORDER RIGHT THROUGH TO HANDOVER



FULLY CERTIFIED: CE, UKCA, FCC, CCC, ETL, RoHS, LVD, EMC



OPTION: BUILT-IN digiLED's ZEUS POWER MANAGEMENT SYSTEM AT ADDITIONAL COST



Direct-to-wall Mounting:

Fixing an LED screen directly to the wall, without a frame, eliminates the need for the manufacture of a metal structure, saving time, money and travel/transport costs. No additional materials or bracketry need be used, the LED panels are mounted to an approved building material, typically plywood, MDF or plasterboard such as Gyproc Habito.

228-Step Production Plan

The digiLED 228-step Production Plan helps us manage processes so we can hit schedules and plan logistics efficiently, therefore avoiding the need to revert to air freight which uses 44 times more CO₂ than a ship. The 228-Step Production Plan also ensures that digiLED makes high quality products, meaning that it will give years of reliable, trouble-free service; the best decision for the environment is not to buy on price but to buy a product that will last for years.

Shipping

Sea freight is prioritised as the shipping method from China as it uses 44 times less CO₂ than air transport delivery.

Serviceable

digiLED always briefs clients that a well-maintained screen will have a life expectancy of 10 years plus. As a company, we stand by this by offering tech support and parts for all legacy products. Currently, the oldest clients screen supported by digiLED is 14 years old and requires windows XP to operate it - but it still operates.



ZEUS®

LED Screens used in commercial installations rarely operate 24/7. Venues and auditoriums don't have a permanent audience. A dirty secret of our industry is that often, when a screen is not in use, it is simply displaying a black image or video. The power is still live, using 7% to 17% of the maximum energy consumption or, looked at another way, up to 50% of the average energy usage!

Designed in the UK, digiLED's patent pending ZEUS® stands for "Zero Energy Use System". A screen set to black with digiLED ZEUS will use ZERO power. Additionally, ZEUS cards are manufactured in Liverpool and Dorking (UK). More details on ZEUS® in the dedicated ZEUS brochure.

Recyclable Material

Aluminium is used extensively in digiLED's LED tiles and the frames/chassis. As one of the most widely recycled materials on earth, this gives excellent options when considering how to dispose of an end-of-life digiLED screen.

LED tiles that are constructed out of aluminum retain a high materials value at the end of their life. These are much more likely to be shredded and metal-extracted before waste processing is considered complete.



Copper also makes up a large percentage of the product by weight - again, easily recyclable.

RoHS standards are closely monitored during production (and other international standards appropriate to the region). An example of this is the environment, chemical and processes audit of one of our production lines by Sony before they approved the use of digiLED.

Direct-to-wall Mounting:

Fixing an LED screen directly to the wall, without a frame, eliminates the need for the manufacture of a metal structure, saving time, money and travel/transport costs. No additional materials or bracketry need be used, the LED panels are mounted to an approved building material, typically plywood, MDF or plasterboard such as Gyproc Habito.

228-Step Production Plan

The digiLED 228-step Production Plan helps us manage processes so we can hit schedules and plan logistics efficiently, therefore avoiding the need to revert to air freight which uses 44 times more CO2 than a ship. The 228-Step Production Plan also ensures that digiLED makes high quality products, meaning that it will give years of reliable, trouble-free service; the best decision for the environment is not to buy on price but to buy a product that will last for years.

Shipping

Sea freight is prioritised as the shipping method from China as it uses 44 times less CO2 than air transport delivery.

Serviceable

digiLED always briefs clients that a well-maintained screen will have a life expectancy of 10 years plus. As a company, we stand by this by offering tech support and parts for all legacy products. Currently, the oldest clients screen supported by digiLED is 14 years old and requires windows XP to operate it - but it still operates.



CONTACT US

LONDON

UK HEAD OFFICE

The Pixel Depot, Copse Farm, Moorhurst Lane, Beare Green, Surrey RH5 4LJ UK

tel: +44 20 7381 7840 e-mail: info@digiLED.com

 [Sales](#)  [Admin](#)  [Pixel Depot](#)  [Tech Hub](#)  [Service Lab](#)

LAS VEGAS

The Pixel Depot, 365 Pilot Road, Suite A, Las Vegas, Nevada, 89119, USA

tel: +44 20 7381 7840 e-mail: info@digiLED.com

 [Sales](#)  [Admin](#)  [Pixel Depot](#)  [Tech Hub](#)  [Service Lab](#)

DALLAS

digiLED Service Lab, 8291 Gateway Dr, Argyle, TX 76226, USA

 [Service Lab](#)

SHENZHEN

SHENZHEN DIGI TECHNOLOGY CO. LTD,

The Pixel Depot, Room 1807, Haohai Junyue Bldg, 2092 Shenyan Road, Hai Shan Street, Yantian District, Shenzhen 518000, China

 [Tech Hub](#)  [Logistics](#)  [Service Lab](#)

SALES OFFICES IN MILAN, THE HAGUE, NANTES AND TOKYO

TALK TO US AND BE SOCIAL

+44 20 7381 7840 info@digiLED.com www.digiLED.com

 [digiLED_](#)  [digiLEDscreens](#)  [digiLEDscreens](#)  [digiLED_](#)